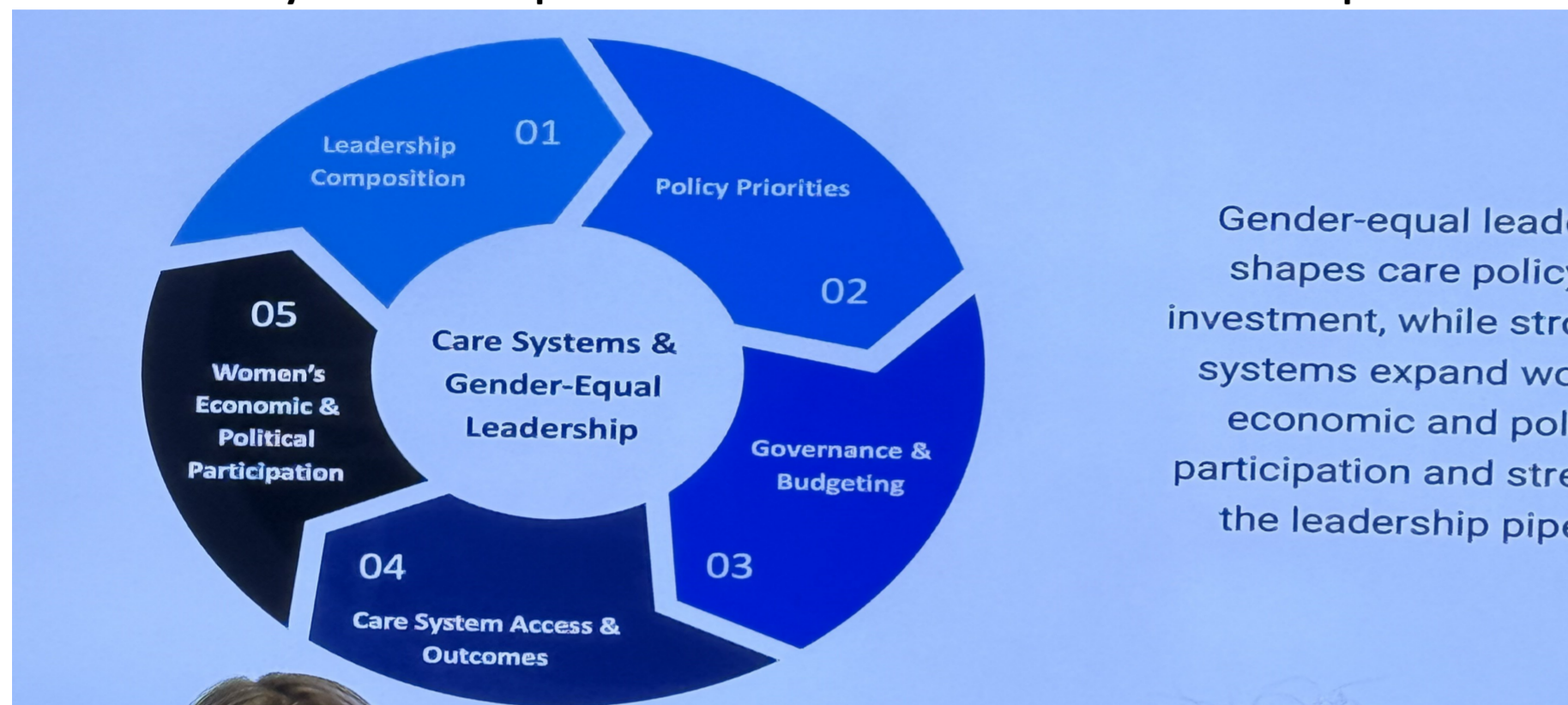


CSBAG BUDGET NEWS



Care Economy and Data Gaps central in Push for Women’s Economic Empowerment



Gender-equal leadership shapes care policy investment, while strong systems expand women’s economic and political participation and strengthen the leadership pipeline.

The care economy and gender equal leadership session during the UN 70th Commission on the status of women. (Source: CSBAG)

The United Nations 70th session of the Commission on the Status of Women (UNCSW70), which took place between 9th to 20th March 2026, gathered delegates from across the world including Ministers, UN experts, civil society leaders, and regional blocs, to interrogate one of the most enduring challenges to gender equality: the global failure to ensure full and equitable access to justice for women and girls.

A parallel session attended by CSBAG on women’s leadership and the economy, spotlighted caregiving, data fragmentation, and underinvestment in women’s health as critical barriers to gender equality, calling for systemic reforms backed by public finance and measurable accountability.

Presenting data in time use, Dr. Wang underscored the scale and economic toll of caregiving, noting that women make up **60%** of caregivers and lose an average of **3.2** workdays each month. The financial strain, she said, exceeds **\$7,000** annually for many households. She argued that caregiving must be treated as essential infrastructure, requiring sustained public investment and policy prioritization.

Care systems are economic systems, Wang emphasized, urging governments to integrate caregiving into national economic planning rather than treating it as a private burden.

The discussion broadened to institutional accountability, with Professor Lisa, a former lieutenant governor, highlighting the lack of consistent global data on women’s participation in legal and security sectors. She called for tracking the proportion of women serving as judges, police officers, and elected officials, arguing that such metrics are essential for designing responsive policies. The Panelists emphasized the issue of fragmented data systems. Fitsum Habtemariam, drawing on his experience with the United Nations, said that disjointed datasets across education, health, and economic sectors prevent a full understanding of the

barriers facing girls and women “We cannot fix what we cannot see in a connected way,” he said, advocating for integrated, human-centered data systems that track outcomes across a woman’s life cycle. Persistent inequities in women’s health research were highlighted where chronic underfunding, and underrepresentation, particularly in neurological and behavioral health conditions have far-reaching economic consequences.

The economic case for women’s leadership was further emphasized pointing to the gap between women’s share of the population and their representation in economic leadership roles. Closing this gap, can significantly boost economic productivity and national GDP.

Central to the discussion was the introduction of the Girl Institute Index, a new framework designed to measure and improve economic inclusion for women and girls. The index assesses performance across eight domains, including labor market integration, financial access, public finance, and institutional leadership.

A set of proposed actions, including publishing gender-disaggregated leadership data, integrating development datasets, expanding youth representation in policymaking, and increasing investment in women’s health research.

As global conversations on gender equality intensify, it is clear that without coordinated systems, reliable data, and sustained financing, progress will remain uneven and incomplete.

On top of its ongoing budget advocacy in this area, CSBAG add its voice to elevate the **economic narrative of gender equality**, demonstrating that investing in women’s leadership, health, and care systems is not only a social imperative but a driver of inclusive economic growth.

CSBAG IN THE MEDIA



#PARTICIPATORYBUDGETING

CSBAG, signed a Memorandum of Understanding together with Parliament of Uganda’s Forum for Climate Change in order to support each other in budget analysis, advocacy and tracking areas concerning climate change

Presenting data in time use, Dr. Wang underscored the scale and economic toll of caregiving, noting that women make up **60%** of caregivers and lose an average of **3.2** workdays each month. The financial strain, she said, exceeds **\$7,000** annually for many households. She argued that caregiving must be treated as essential infrastructure, requiring sustained public investment and policy prioritization.

SOURCE: The United Nations 70th session Commission on the Status of Women (UNCSW70)